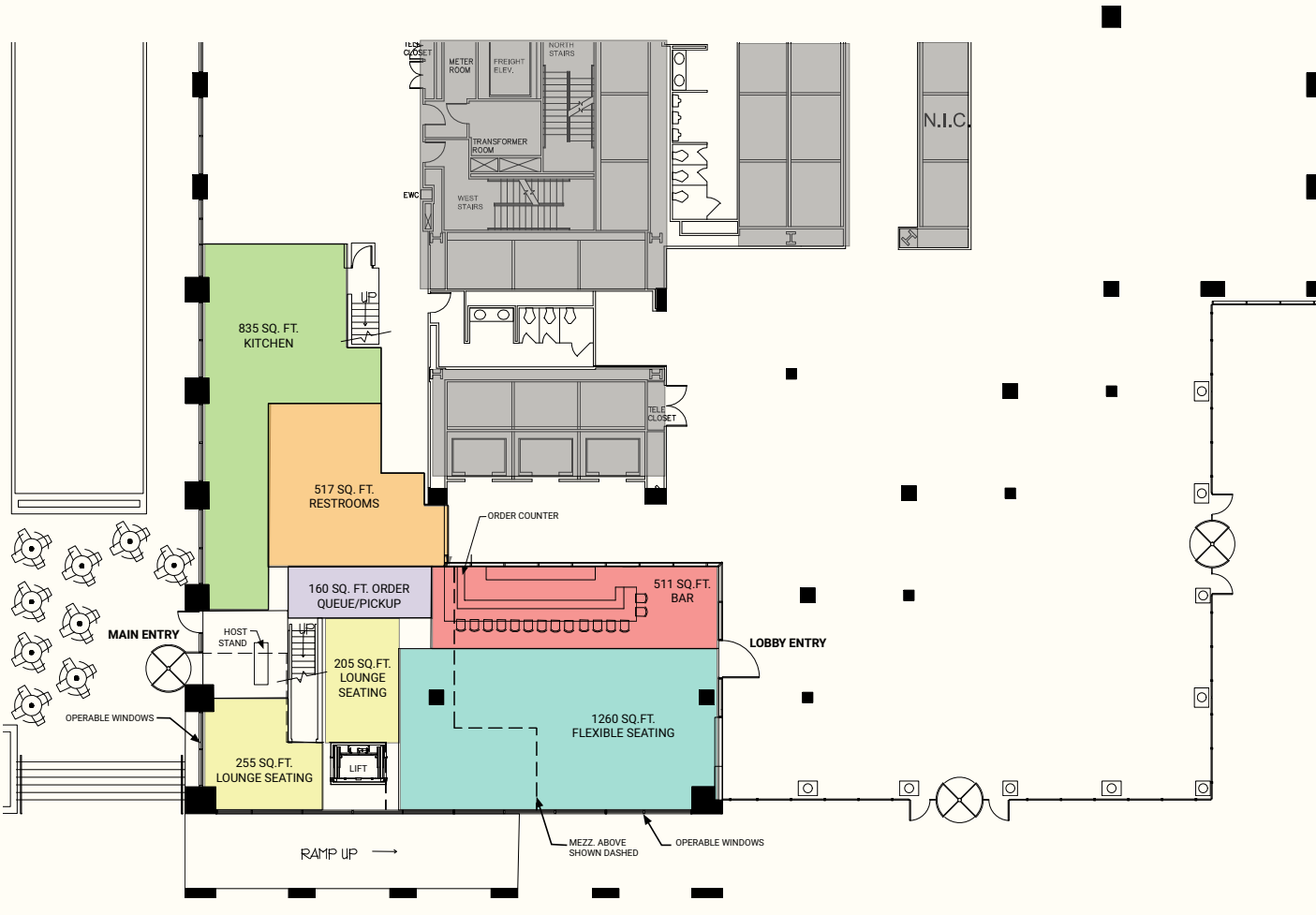


# Suite 100 | Option 1 | Ground Floor

4,717 RSF



200  
W. Madison



## CONTACT:

**Allison Olszta**  
312 935 1428  
allison.olszta@cbre.com

**Jason Houze**  
312 935 1408  
jason.houze@cbre.com

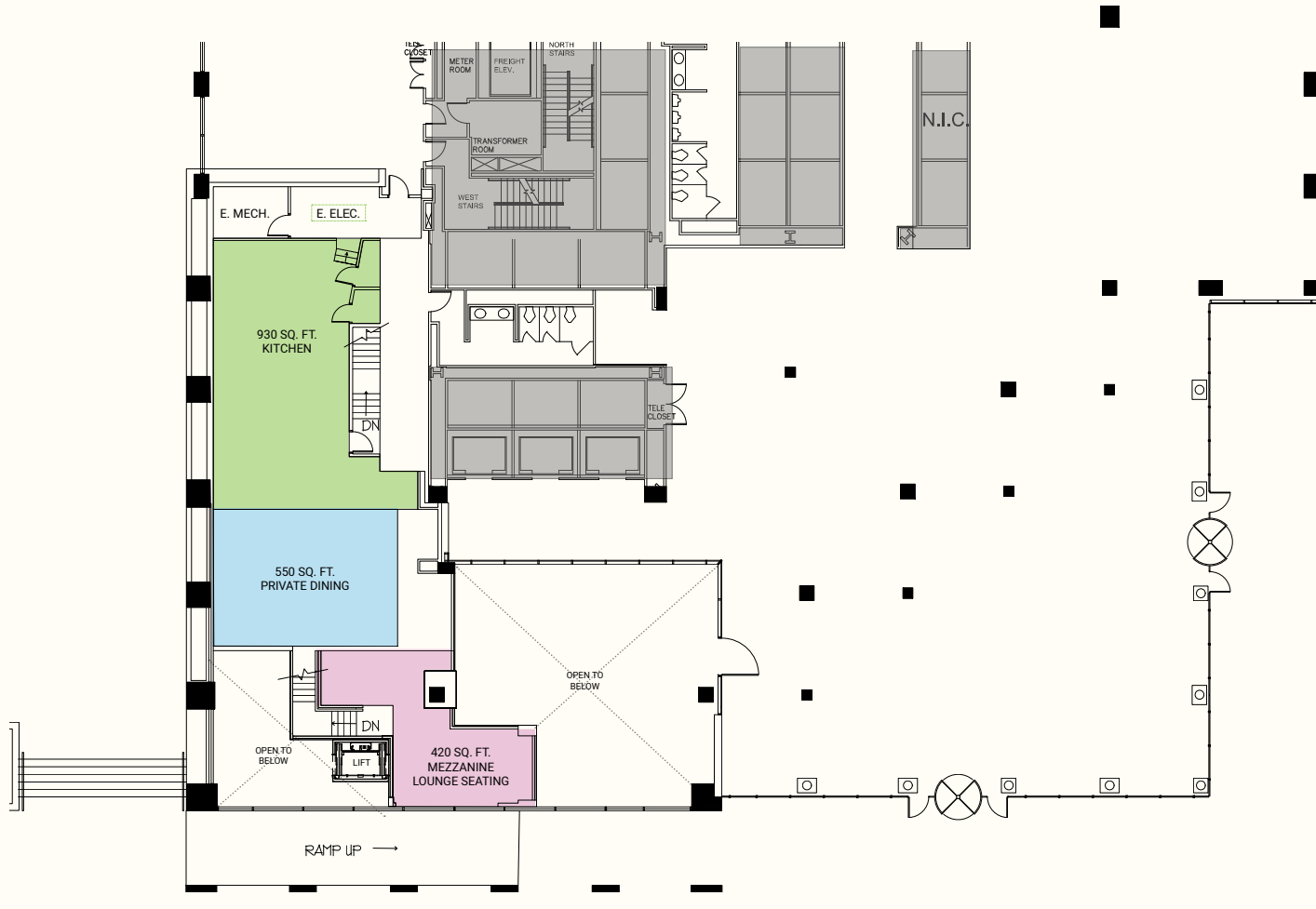
**Michael Kazmierczak**  
312 617 2585  
michael.kazmierczak@cbre.com

# Suite 100 | Option 1 | Mezzanine

4,717 RSF



200  
W. Madison



## CONTACT:

**Allison Olszta**  
312 935 1428  
allison.olszta@cbre.com

**Jason Houze**  
312 935 1408  
jason.houze@cbre.com

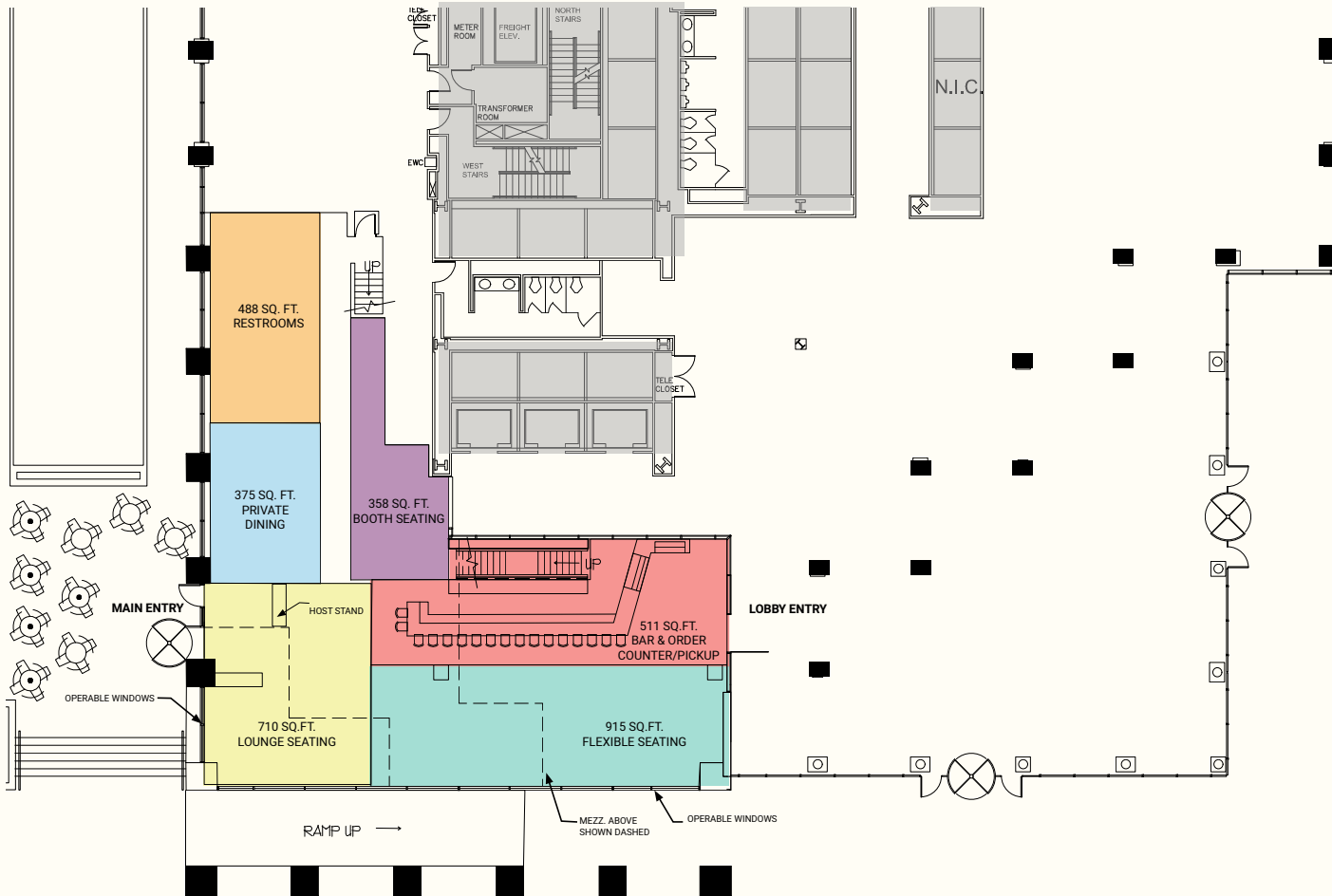
**Michael Kazmierczak**  
312 617 2585  
michael.kazmierczak@cbre.com

# Suite 100 | Option 2 | Ground Floor

4,717 RSF



200  
W. Madison



## CONTACT:

**Allison Olszta**  
312 935 1428  
allison.olszta@cbre.com

**Jason Houze**  
312 935 1408  
jason.houze@cbre.com

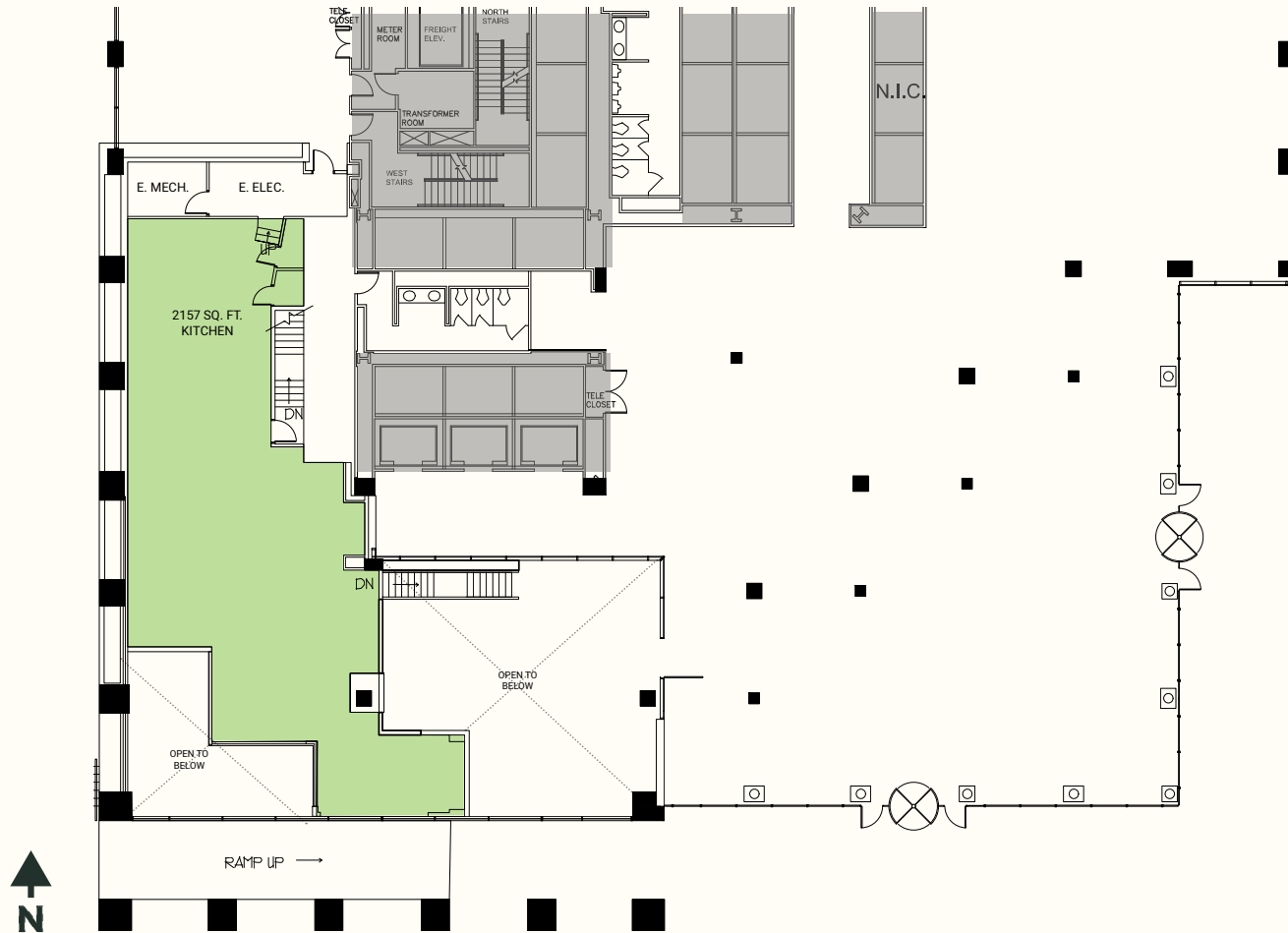
**Michael Kazmierczak**  
312 617 2585  
michael.kazmierczak@cbre.com

# Suite 100 | Option 2 | Mezzanine

4,717 RSF



200  
W. Madison



## CONTACT:

**Allison Olszta**  
312 935 1428  
allison.olszta@cbre.com

**Jason Houze**  
312 935 1408  
jason.houze@cbre.com

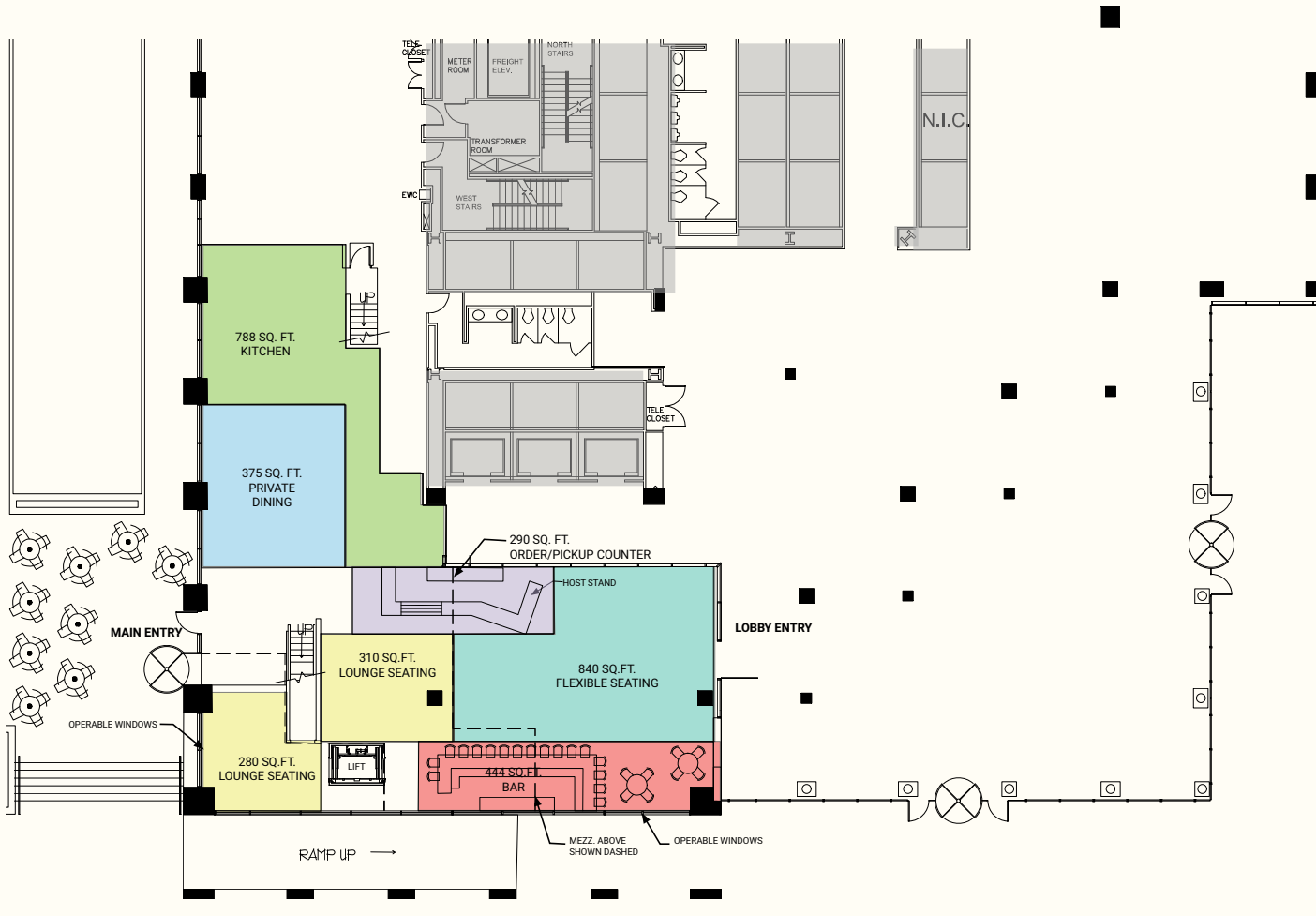
**Michael Kazmierczak**  
312 617 2585  
michael.kazmierczak@cbre.com

# Suite 100 | Option 3 | Ground Floor

4,717 RSF



200  
W. Madison



## CONTACT:

**Allison Olszta**  
312 935 1428  
allison.olszta@cbre.com

**Jason Houze**  
312 935 1408  
jason.houze@cbre.com

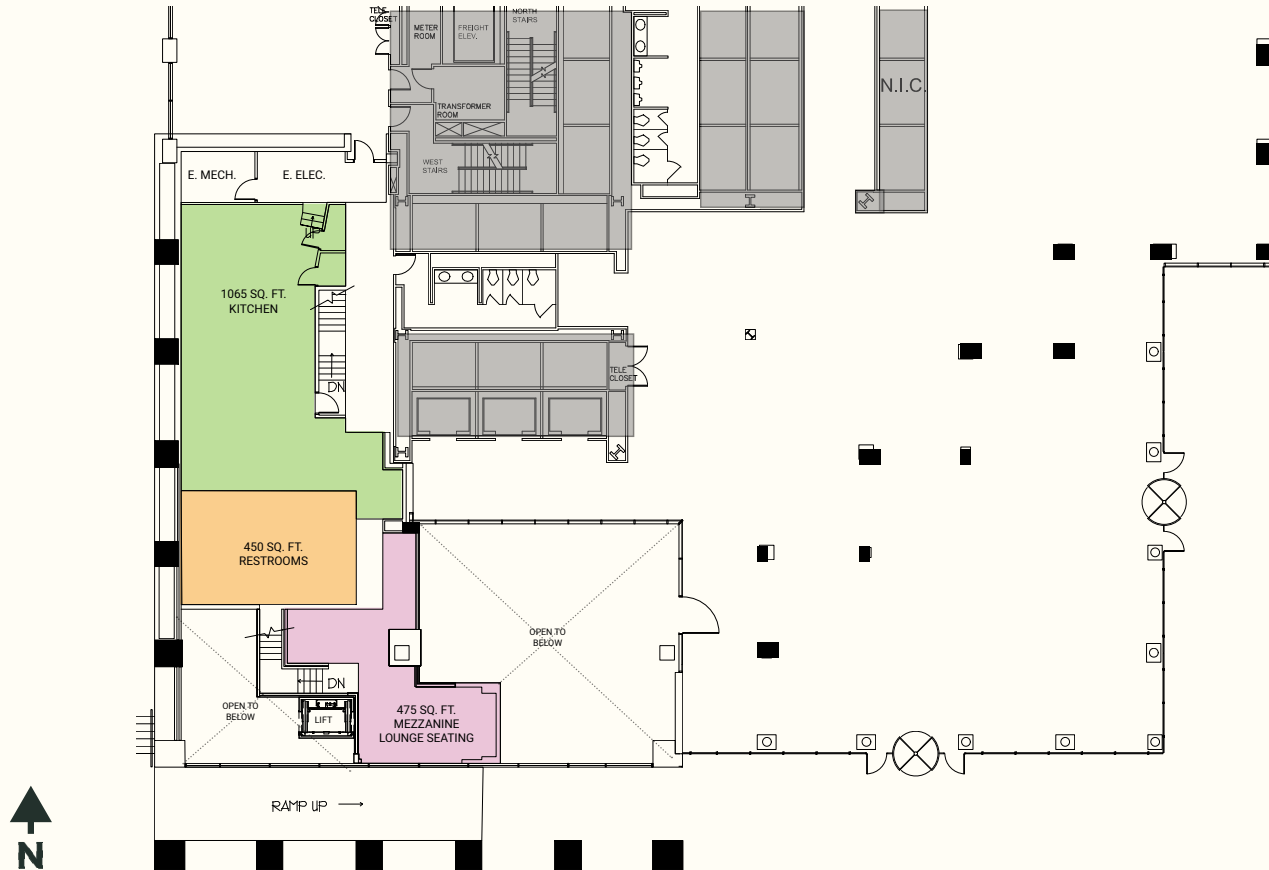
**Michael Kazmierczak**  
312 617 2585  
michael.kazmierczak@cbre.com

# Suite 100 | Option 3 | Mezzanine

4,717 RSF



200  
W. Madison



## CONTACT:

**Allison Olszta**  
312 935 1428  
allison.olszta@cbre.com

**Jason Houze**  
312 935 1408  
jason.houze@cbre.com

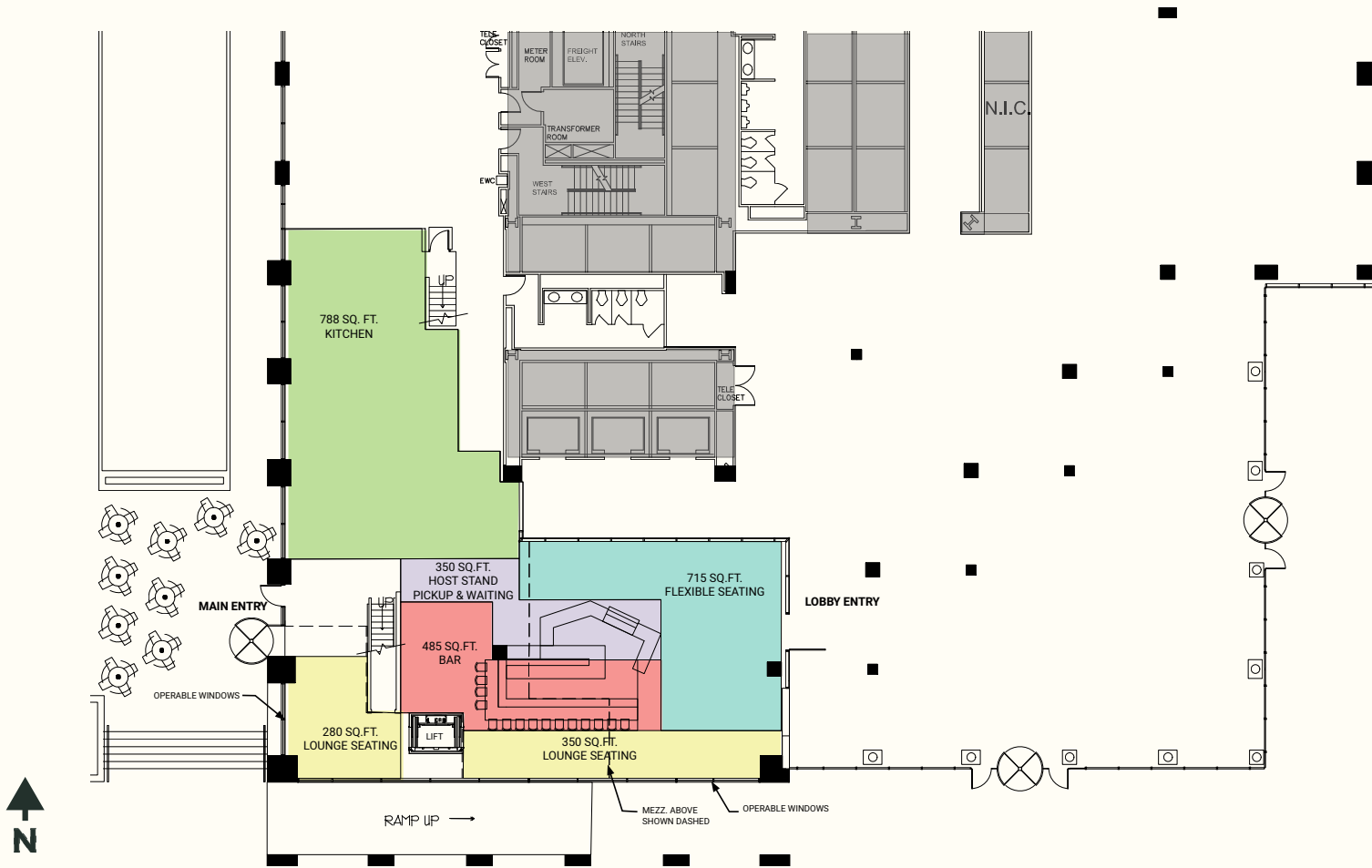
**Michael Kazmierczak**  
312 617 2585  
michael.kazmierczak@cbre.com

# Suite 100 | Option 4 | Ground Floor

4,717 RSF



200  
W. Madison



## CONTACT:

**Allison Olszta**  
312 935 1428  
allison.olszta@cbre.com

**Jason Houze**  
312 935 1408  
jason.houze@cbre.com

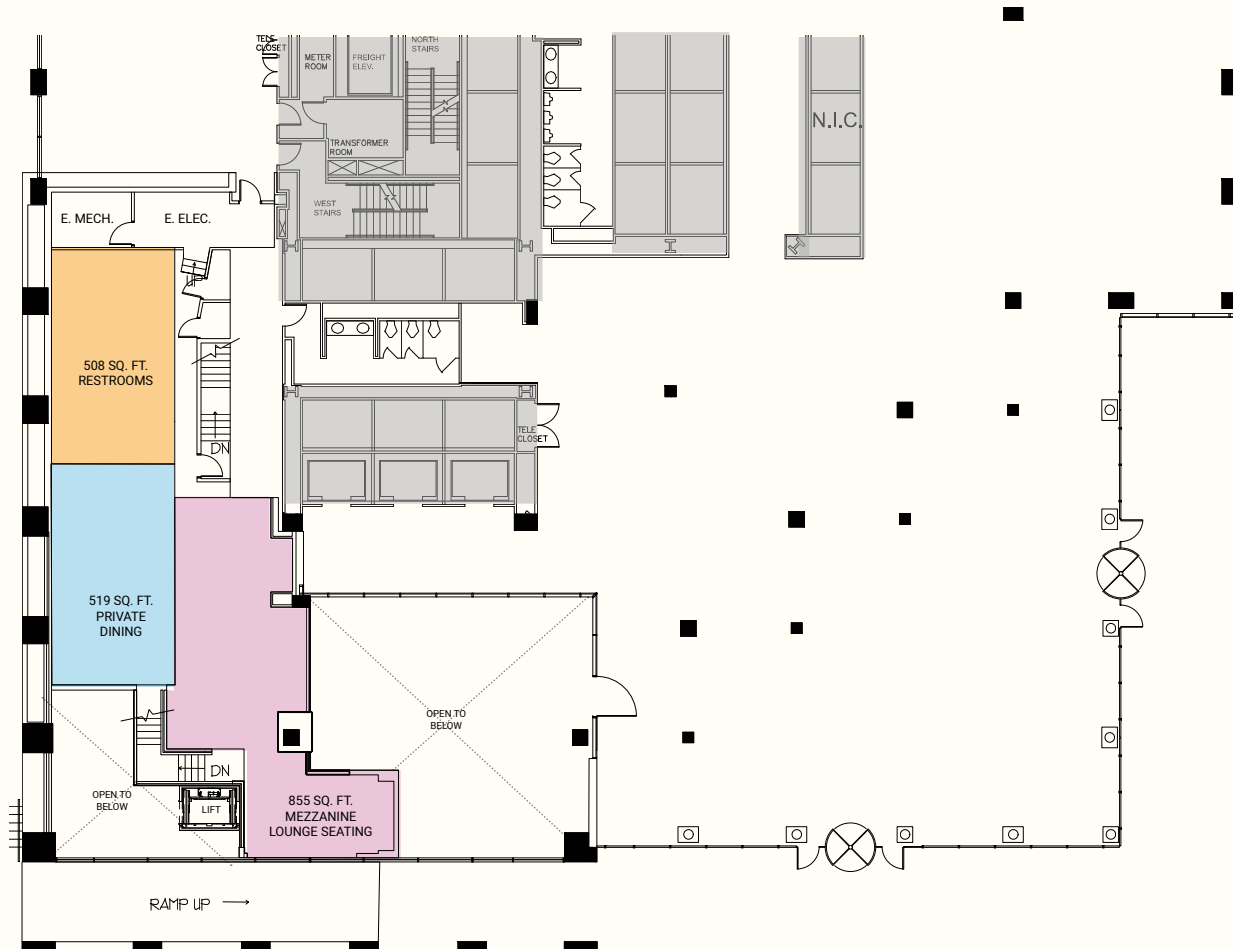
**Michael Kazmierczak**  
312 617 2585  
michael.kazmierczak@cbre.com

# Suite 100 | Option 4 | Mezzanine

4,717 RSF



200  
W. Madison



## CONTACT:

**Allison Olszta**  
312 935 1428  
allison.olszta@cbre.com

**Jason Houze**  
312 935 1408  
jason.houze@cbre.com

**Michael Kazmierczak**  
312 617 2585  
michael.kazmierczak@cbre.com