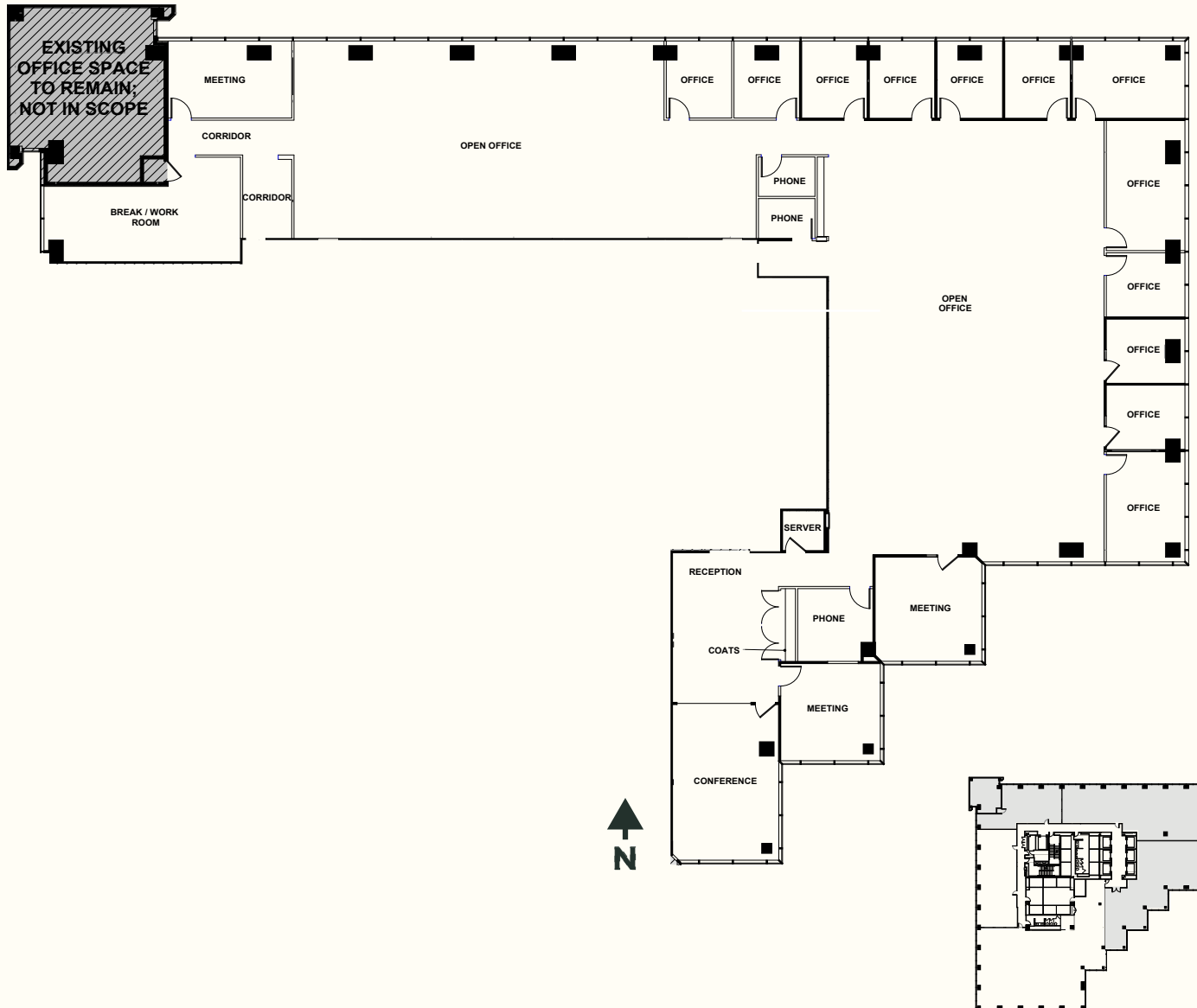


# Suite 1800

10,897 RSF



**200**  
**W. Madison**

## PROGRAM:

- 12 Offices
- 2 Open Areas for Workstations
- 1 Medium Conference Room
- 3 Small Conference/Meeting Rooms
- 1 Break/Work Room
- 3 Phone Rooms

## CONTACT:

**Allison Olszta**  
312 935 1428  
[allison.olszta@cbre.com](mailto:allison.olszta@cbre.com)

**Jason Houze**  
312 935 1408  
[jason.houze@cbre.com](mailto:jason.houze@cbre.com)

**Michael Kazmierczak**  
312 617 2585  
[michael.kazmierczak@cbre.com](mailto:michael.kazmierczak@cbre.com)